



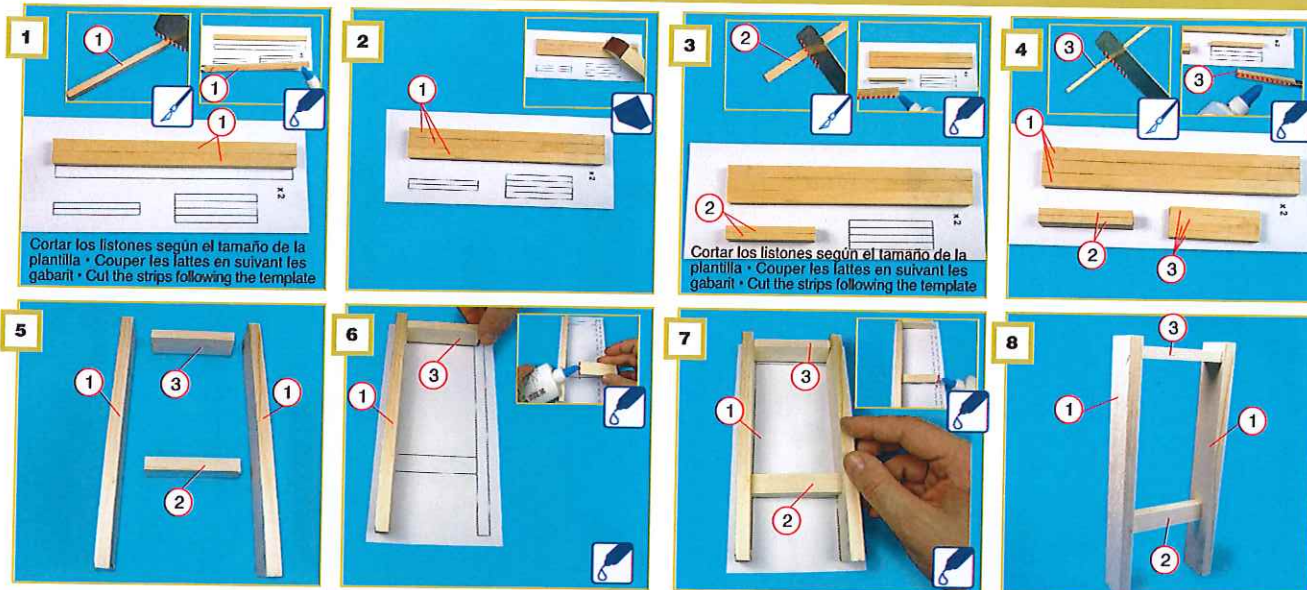
Imprenta de Gutenberg

Imprimante de Gutenberg

Gutenberg's printing machine

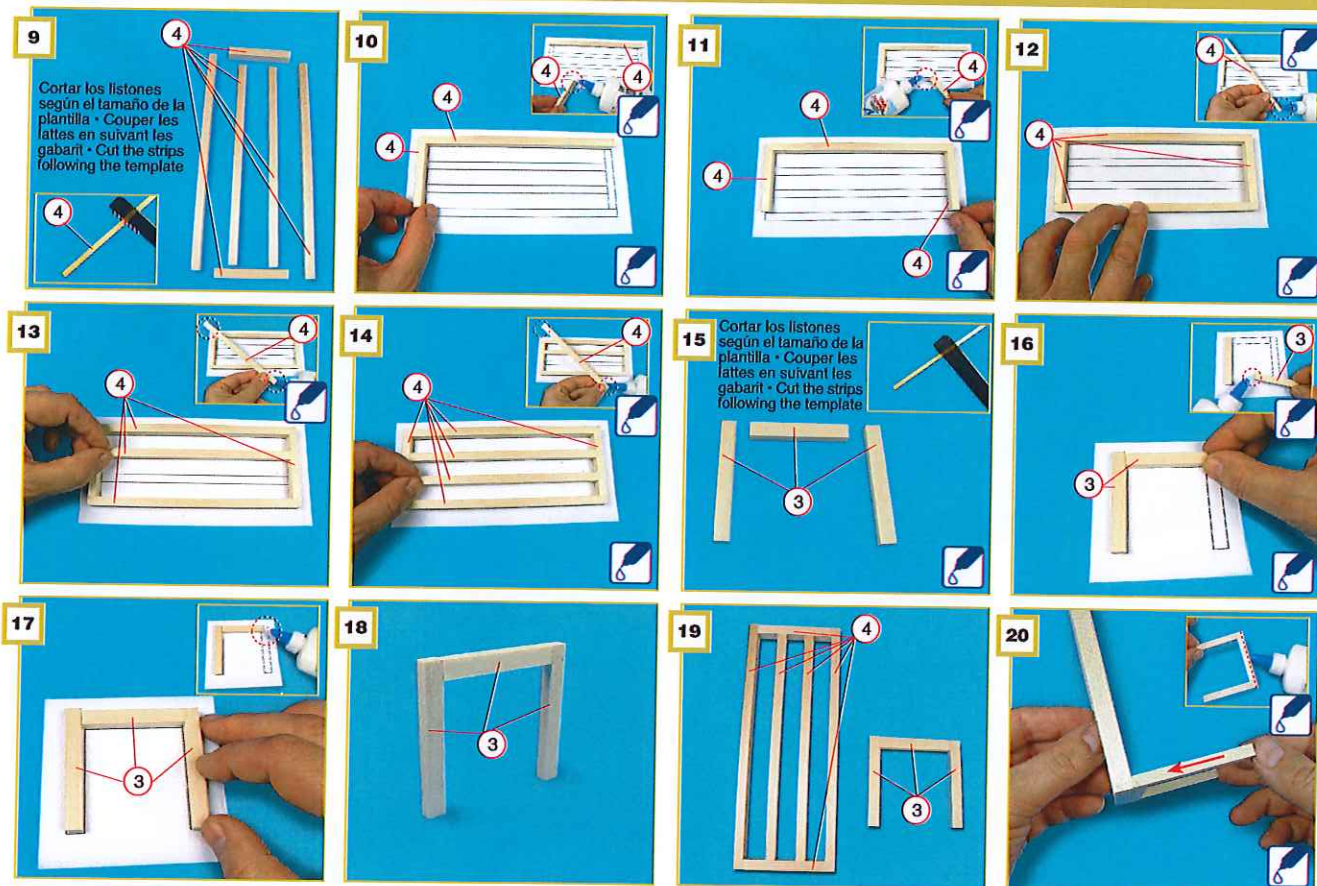
1

Arco central • Partie centrale • Central structure



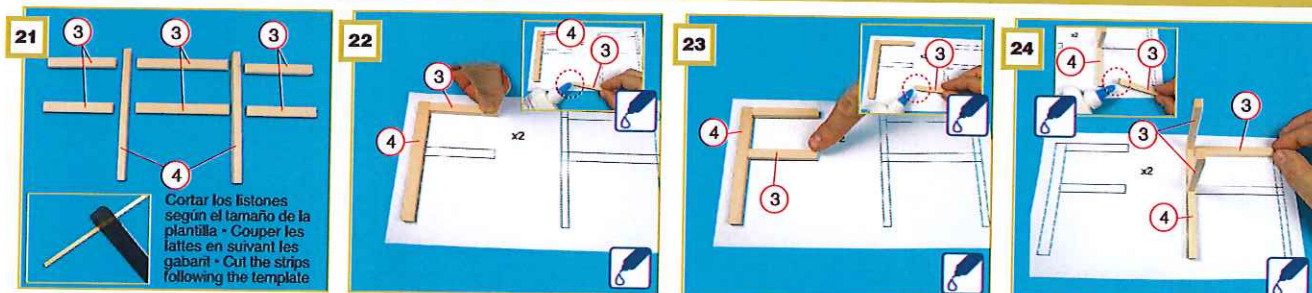
2

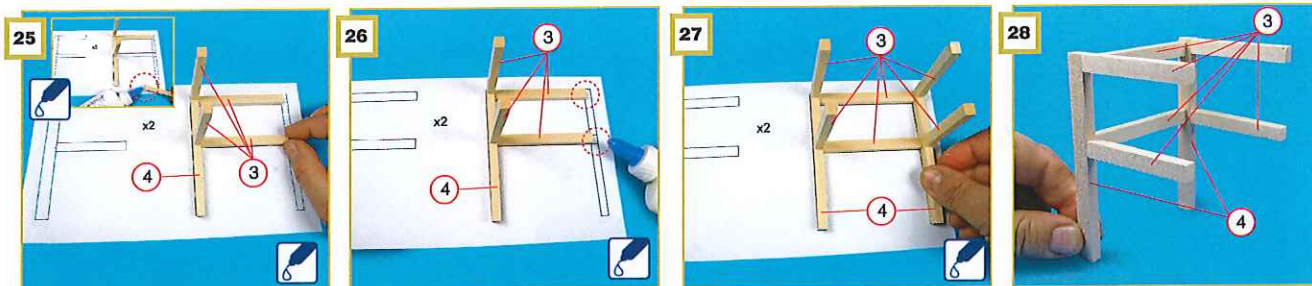
Estructura delantera • Structure avant • Front structure



3

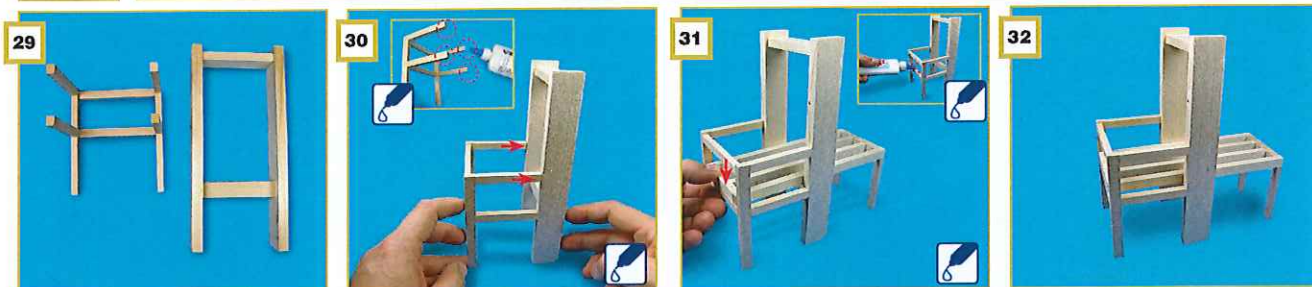
Estructura trasera • Structure arrière • Rear structure





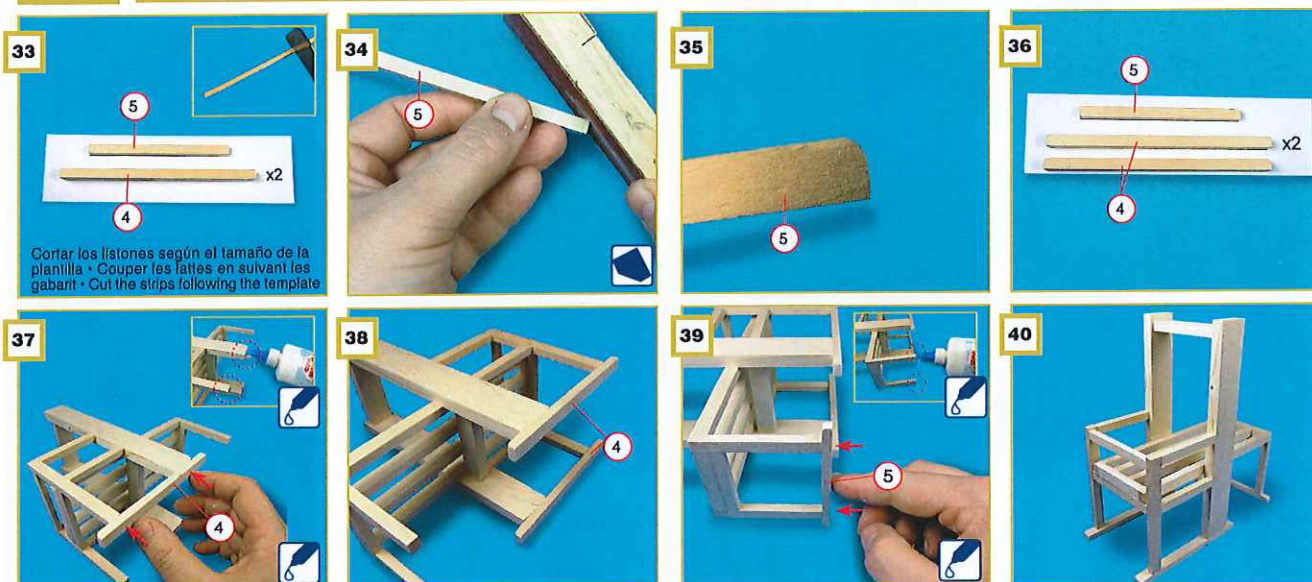
4

Montaje de estructura • Assemblage de la structure • Assembling of the structure



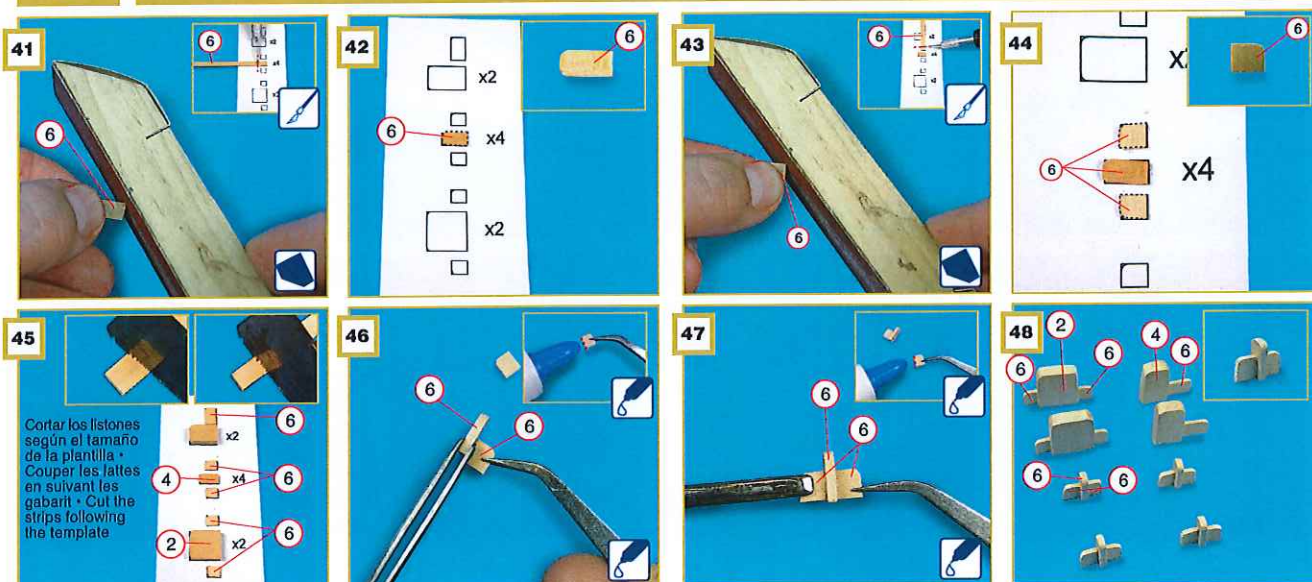
5

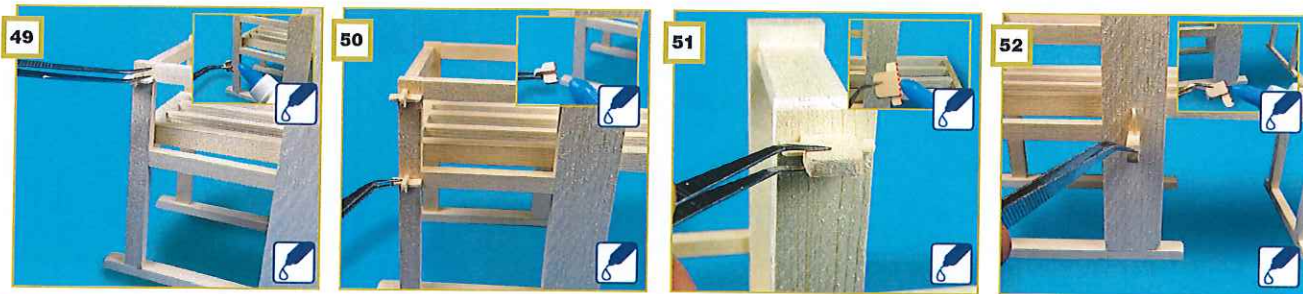
Apoyos • Supports • Stands



6

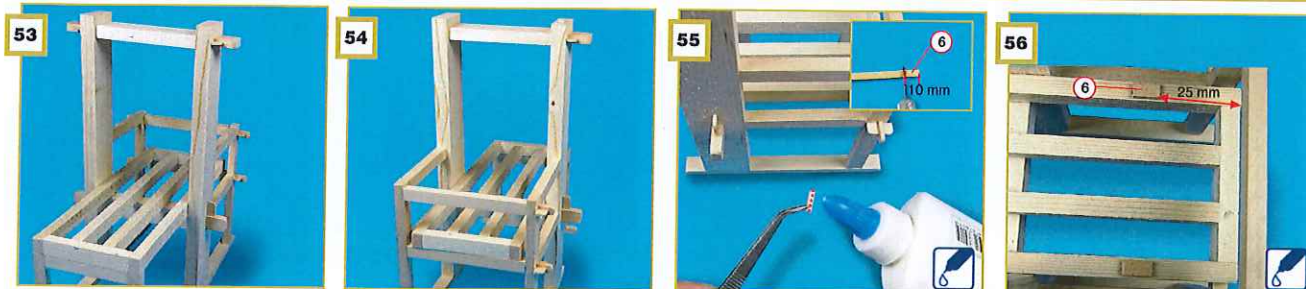
Remates 1/2 • Détails 1/2 • Details 1/2





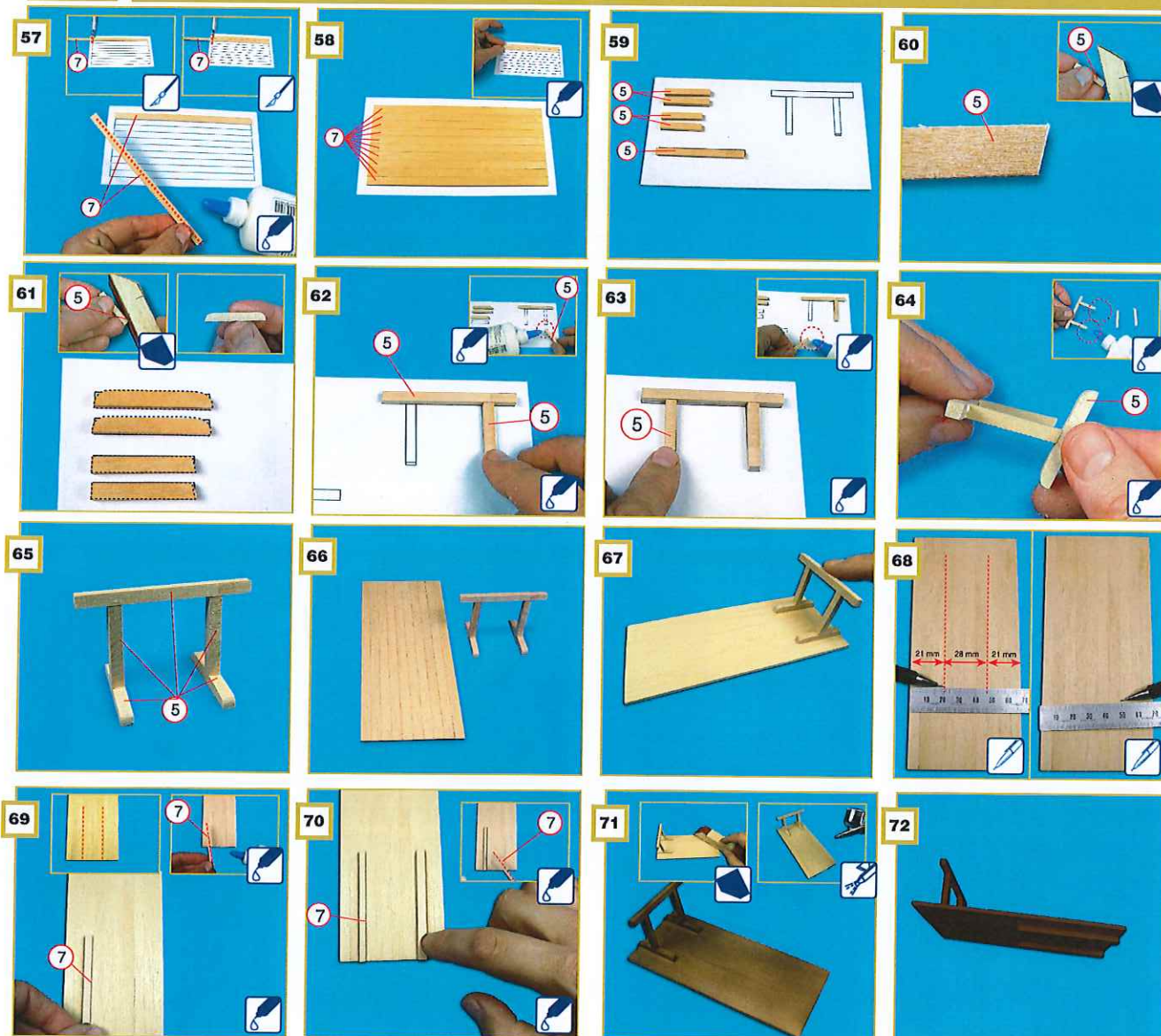
7

Remates 2/2 • Détails 2/2 • Details 2/2



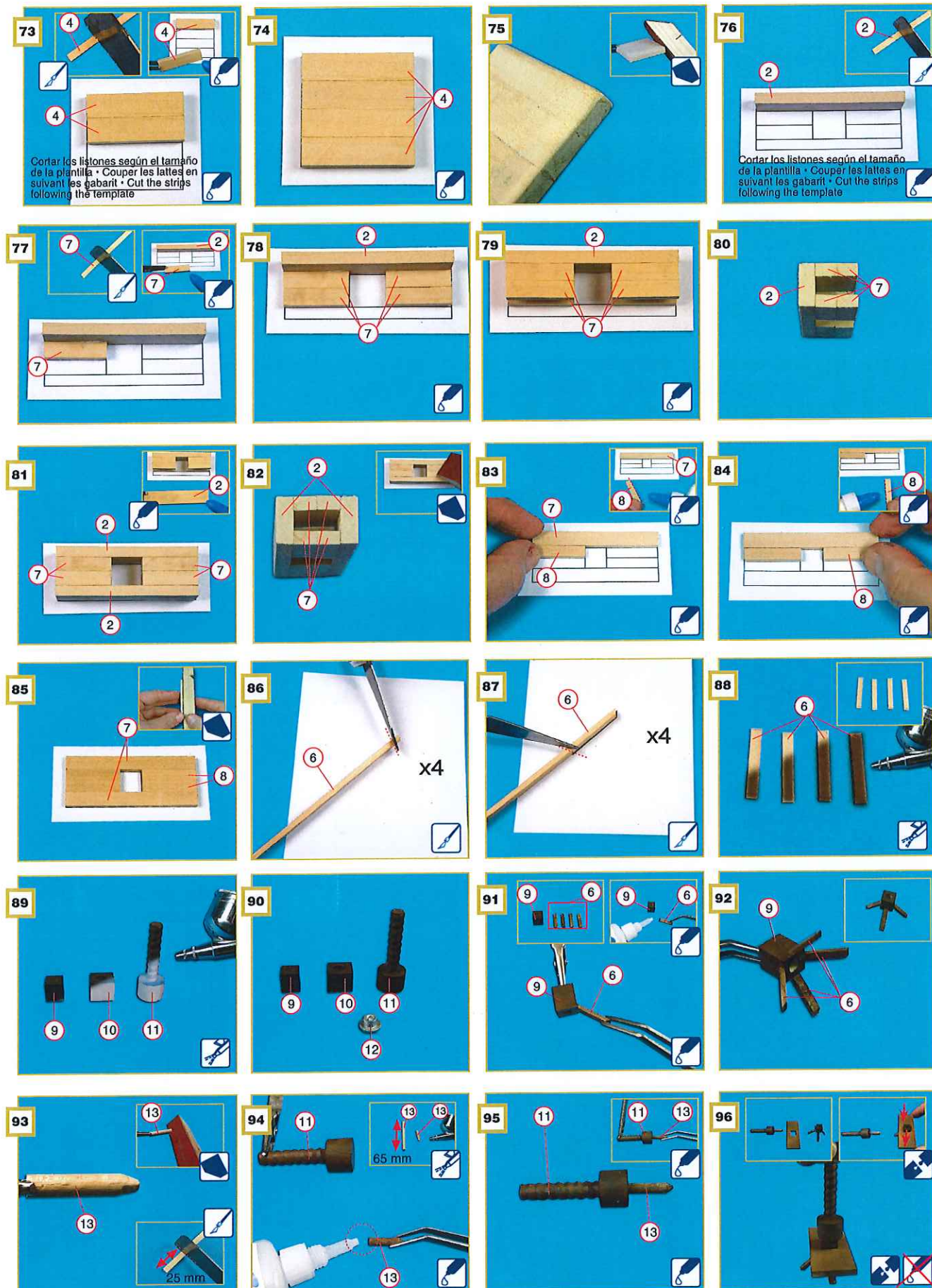
8

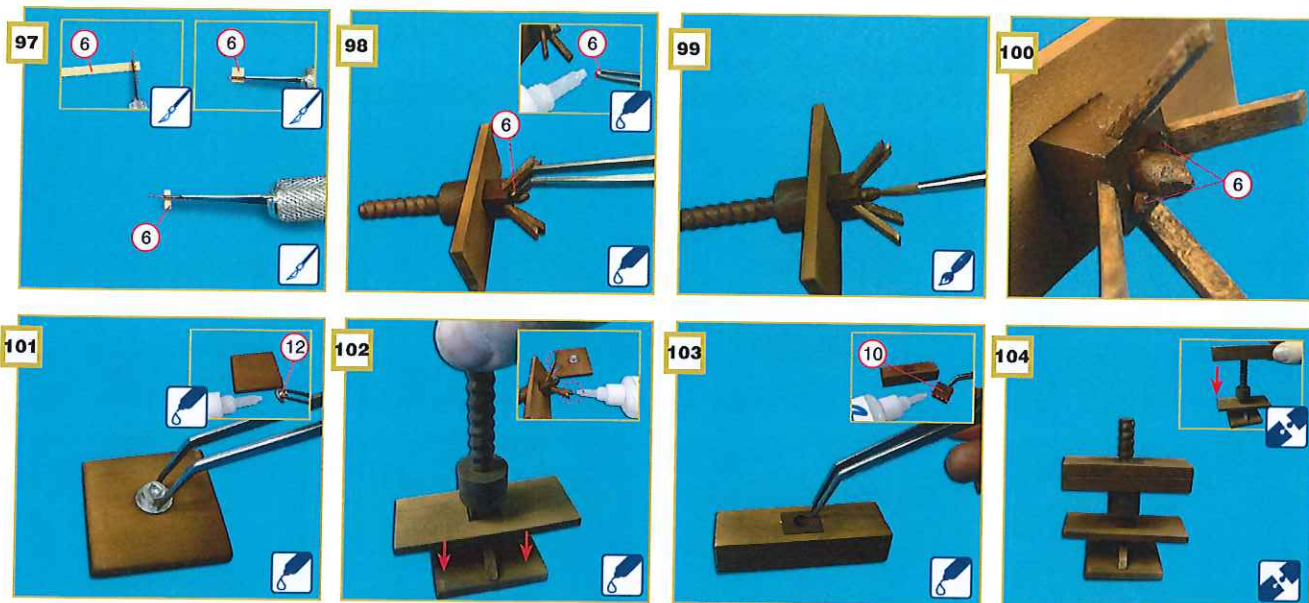
Mesa • Table • Table



9

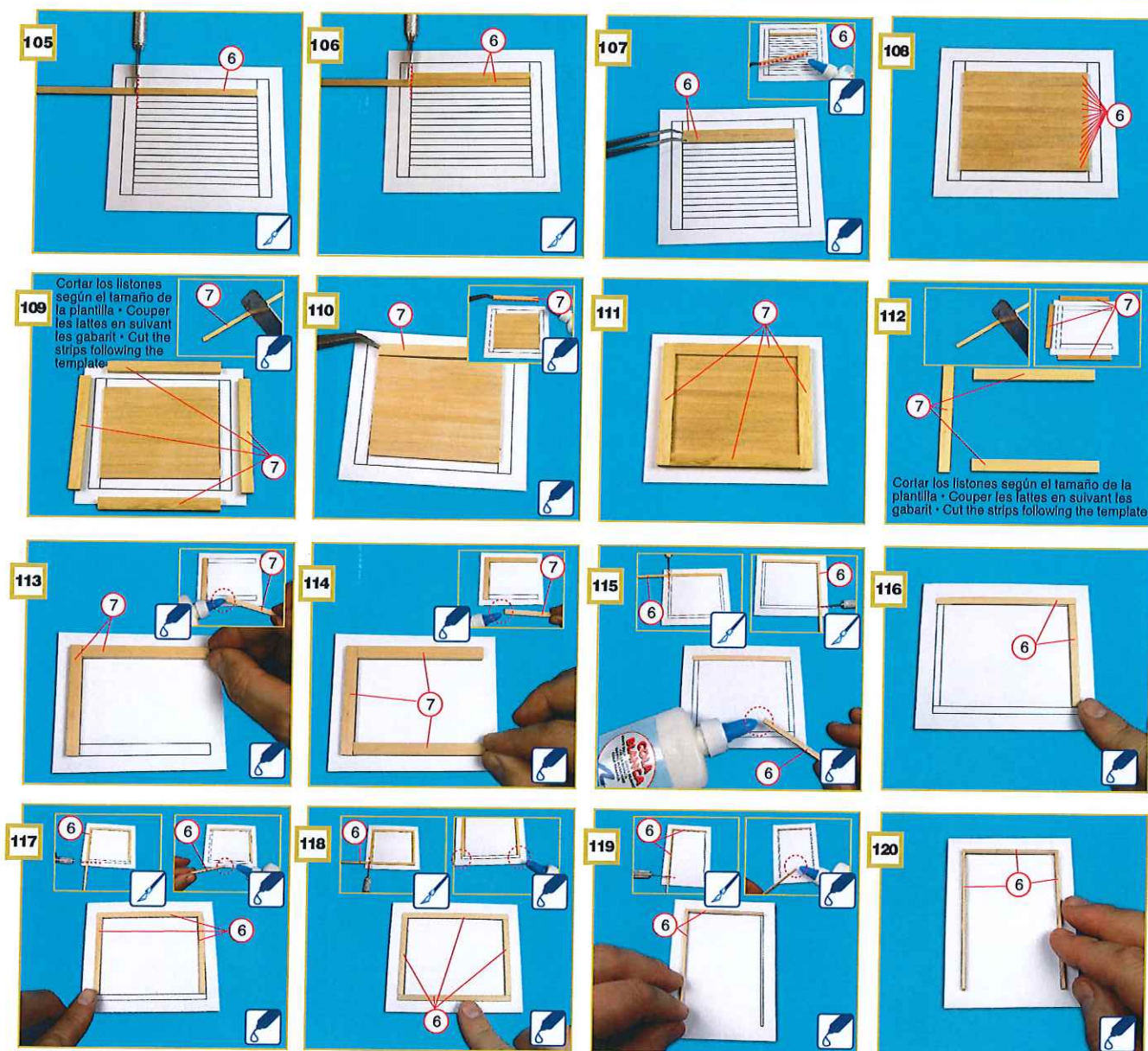
Prensa • Presse • Press

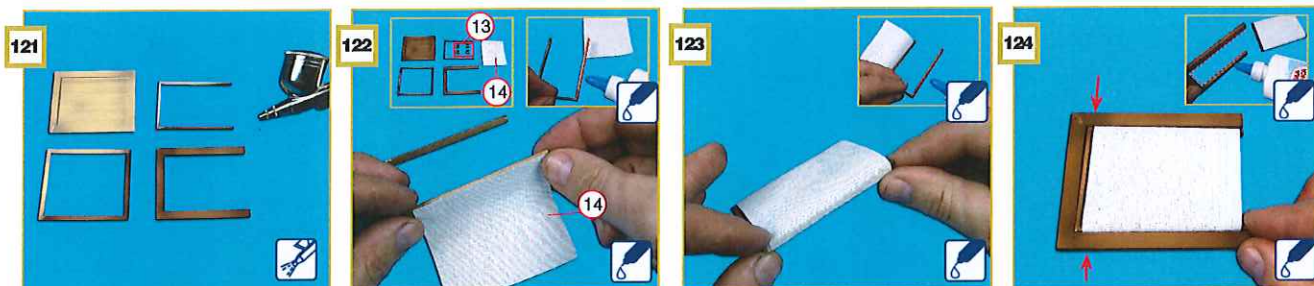




11

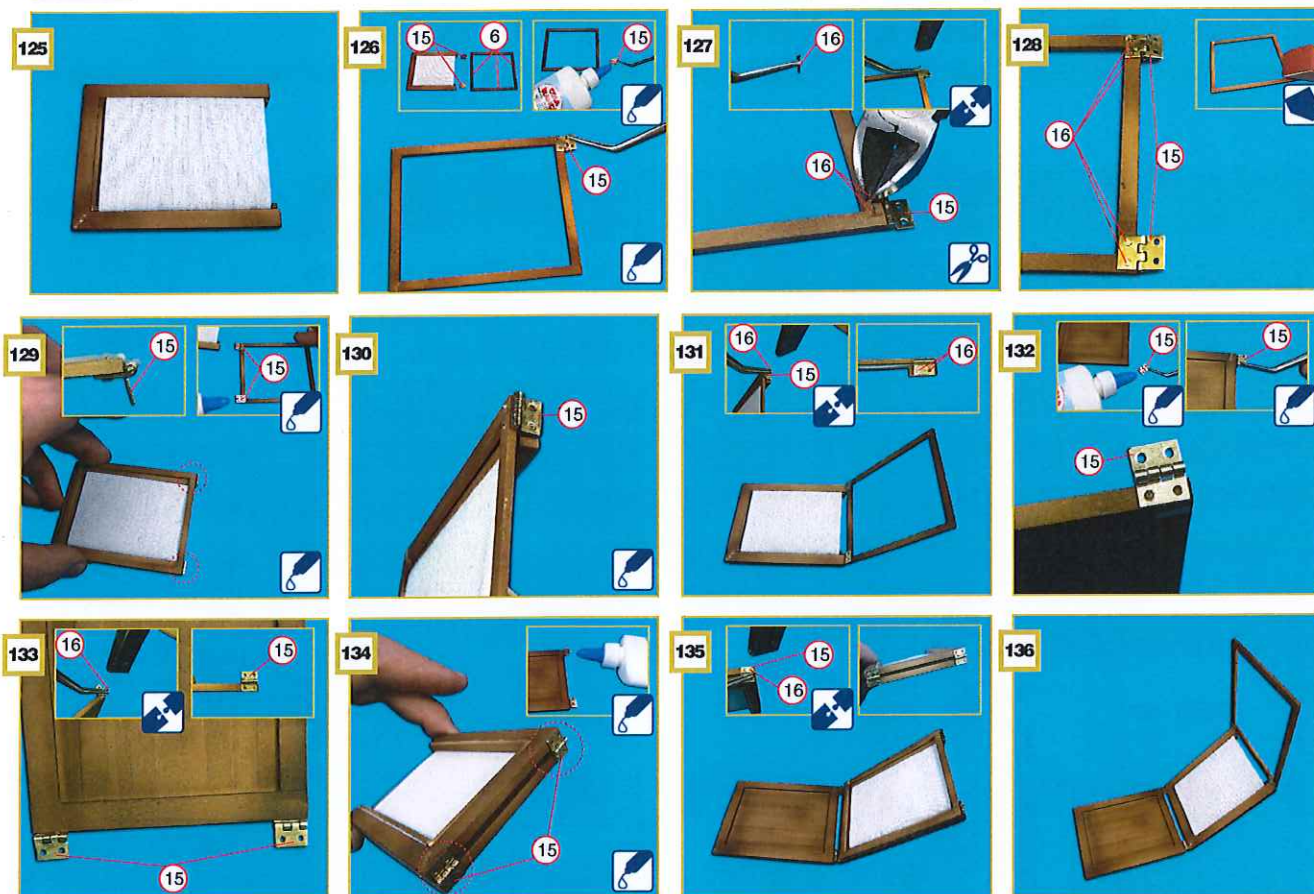
Portapapel 1/2 • Plateau 1/2 • Tray 1/2





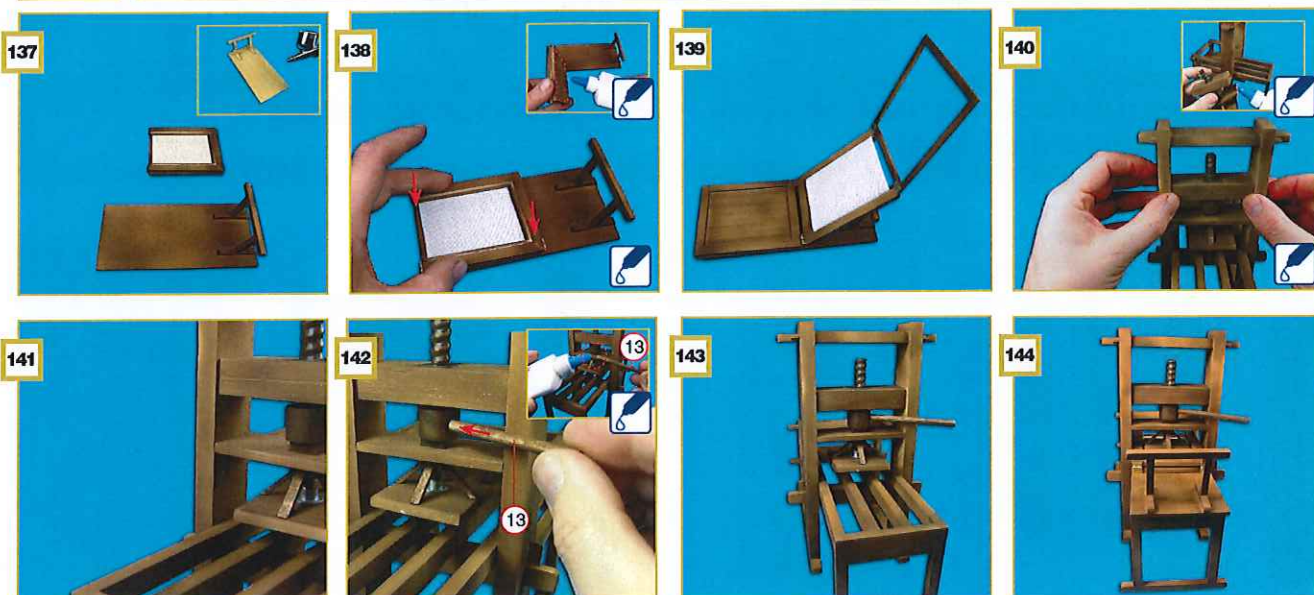
12

Portapapel 2/2 • Plateau 2/2 • Tray 2/2



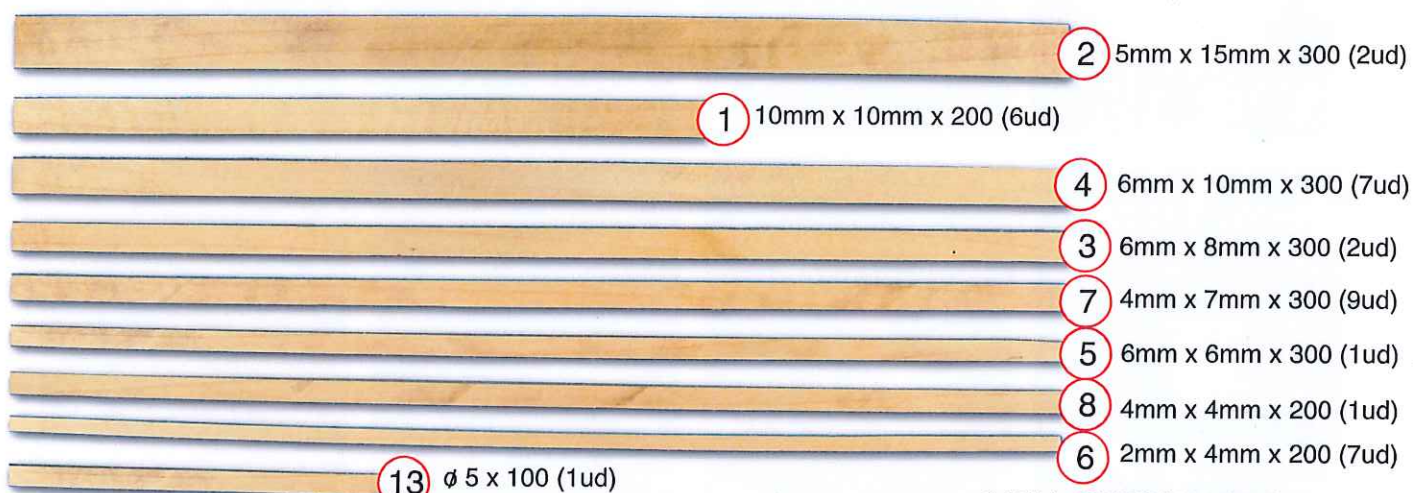
14

Montaje final • Montage final • Final assembling





Listado de piezas • Liste des pièces • Parts list



© 2011 by ARTESANIA LATINA, S.A.
 Las Arenas, 25 - 39593 Lamadrid (Valdáliga-Cantabria)
 España - N.I.F. A-08.631.848
 e-mail: artesanialatina@artesanialatina.net
www.artesanialatina.net

Artesanía Latina se reserva el derecho de modificar el tipo de madera por motivos de producción • Artesanía Latina se réserve le droit de modifier les types de bois pour des raisons de production • Artesanía Latina the right to change the types of wood for production reasons.

